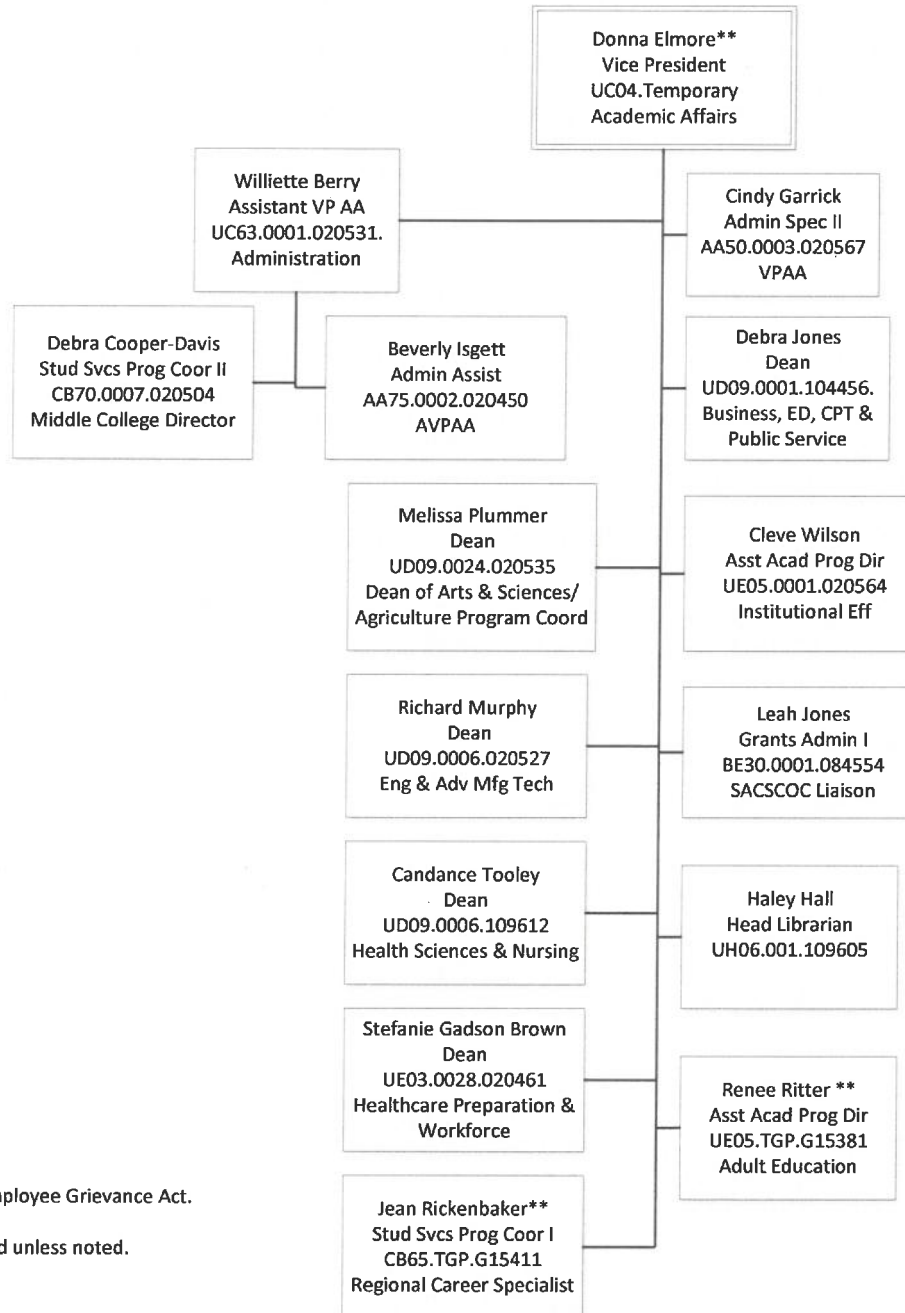


## ORANGEBURG-CALHOUN TECHNICAL COLLEGE ACADEMIC AFFAIRS

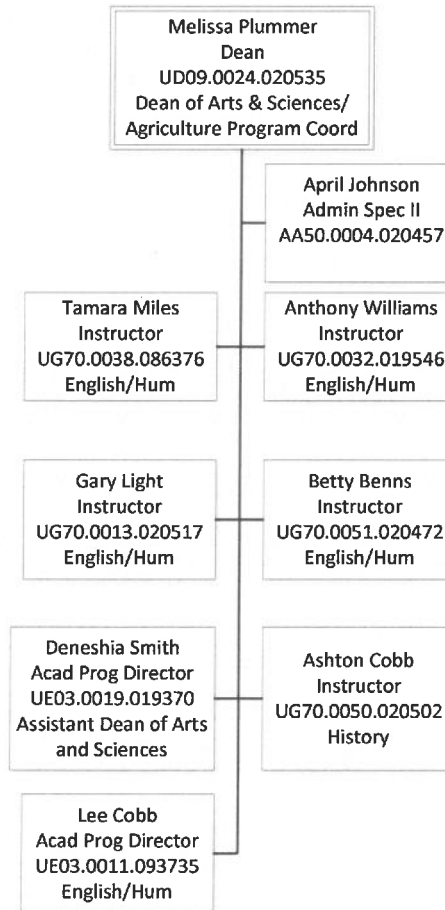


\*\*Exempt from State Employee Grievance Act.

Positions are filled unless noted.



ORANGEBURG-CALHOUN TECHNICAL COLLEGE  
ACADEMIC AFFAIRS  
ARTS & SCIENCES

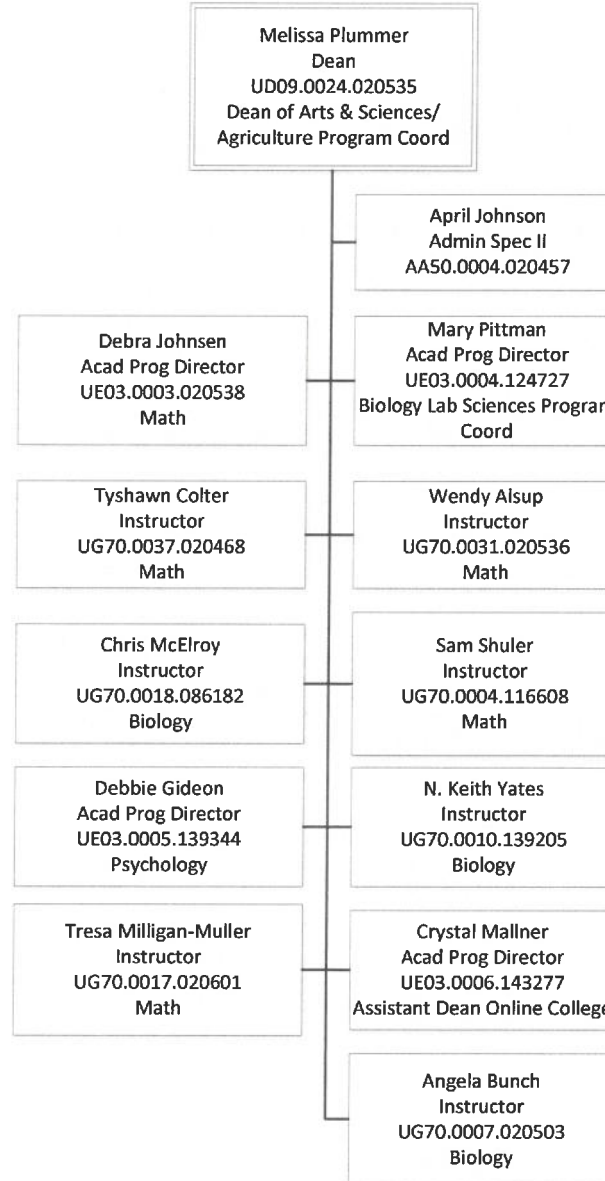


\*\*Exempt from State Employee Grievance Act.

Positions are filled unless noted.



**ORANGEBURG-CALHOUN TECHNICAL COLLEGE**  
**ACADEMIC AFFAIRS**  
**ARTS & SCIENCES**

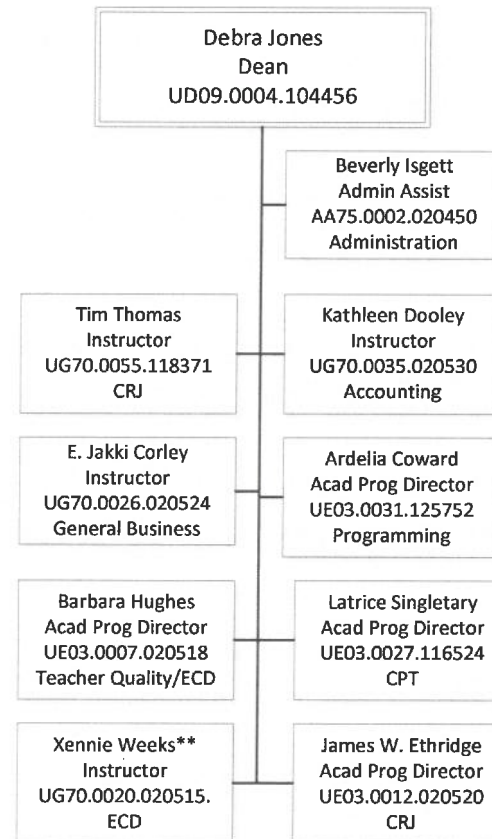


\*\*Exempt from State Employee Grievance Act.

Positions are filled unless noted.



**ORANGEBURG-CALHOUN TECHNICAL COLLEGE**  
**ACADEMIC AFFAIRS**  
**BUSINESS, EDUCATION, COMPUTER TECHNOLOGY & PUBLIC SERVICE**



\*\*Exempt from State Employee Grievance Act.

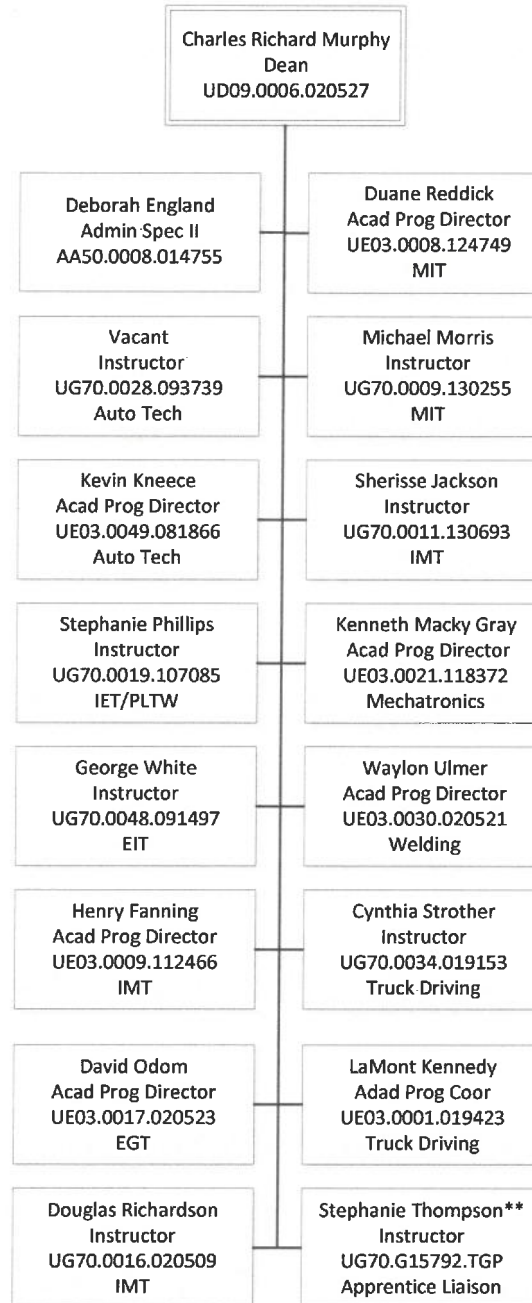
Positions are filled unless noted.



ORANGEBURG-CALHOUN TECHNICAL COLLEGE

ACADEMIC AFFAIRS

ENGINEERING AND ADVANCED MANUFACTURING TECHNOLOGIES

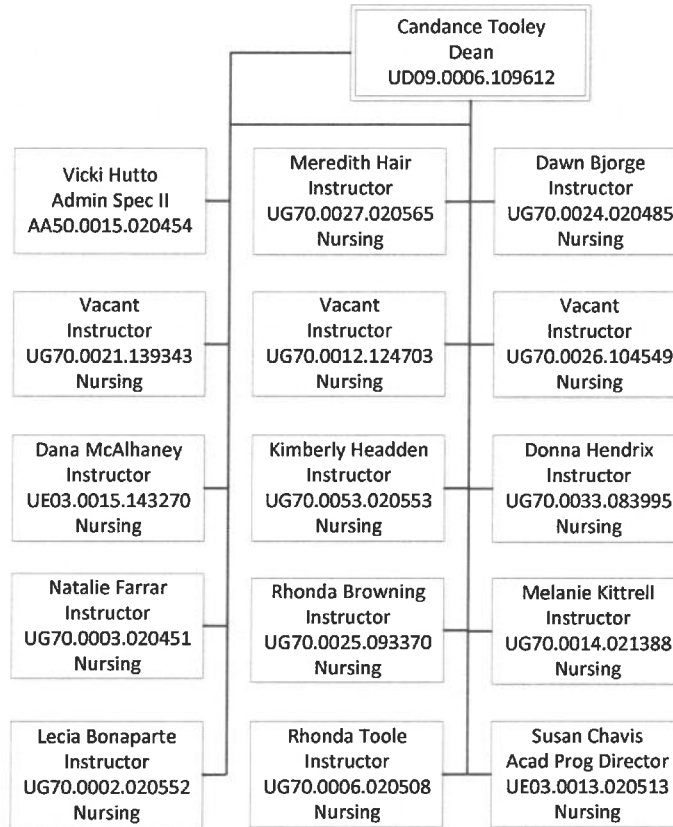


\*\*Exempt from State Employee Grievance Act.

Positions are filled unless noted.



ORANGEBURG-CALHOUN TECHNICAL COLLEGE  
 ACADEMIC AFFAIRS  
 HEALTH SCIENCES AND NURSING  
 NURSING



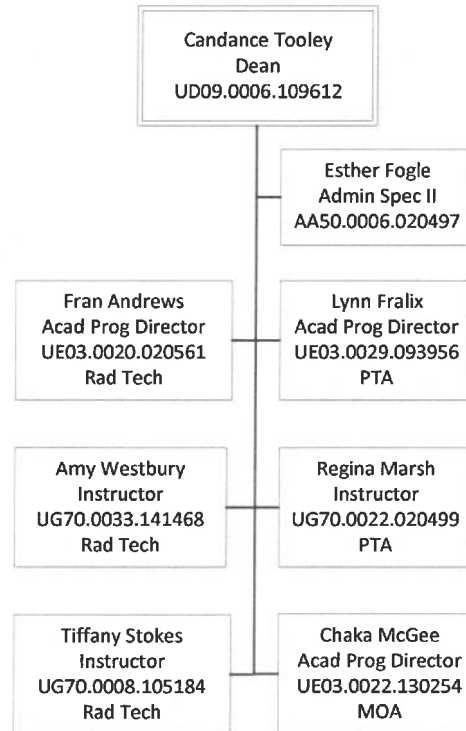
\*\*Exempt from State Employee Grievance Act.

Positions are filled unless noted.



# ORANGEBURG-CALHOUN TECHNICAL COLLEGE

## ACADEMIC AFFAIRS HEALTH SCIENCES AND NURSING HEALTH SCIENCES

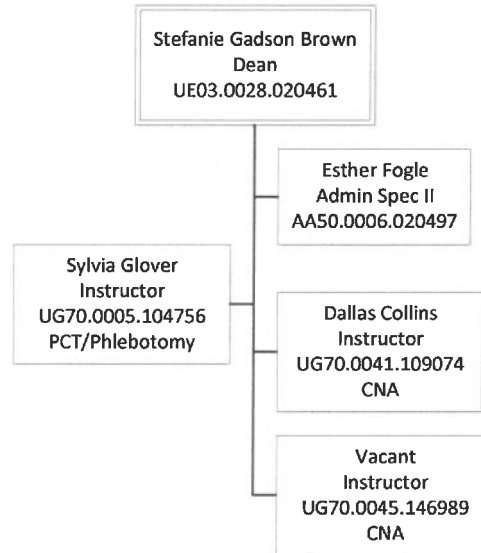


\*\*Exempt from State Employee Grievance Act.

Positions are filled unless noted.



ORANGEBURG-CALHOUN TECHNICAL COLLEGE  
ACADEMIC AFFAIRS  
HEALTHCARE  
PREPARATION & WORKFORCE

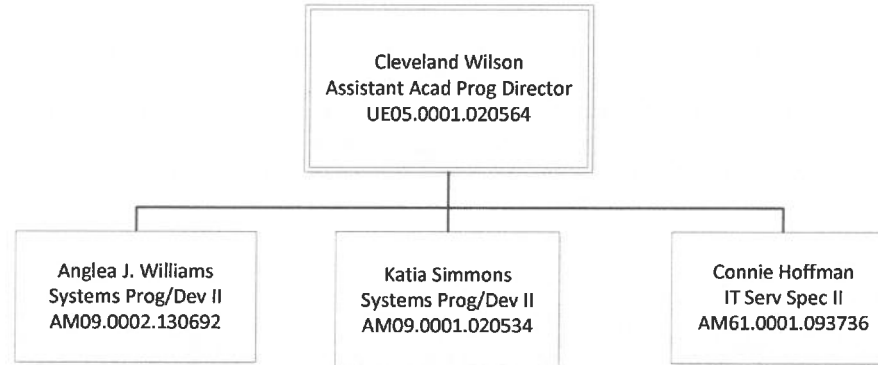


\*\*Exempt from State Employee Grievance Act.

Positions are filled unless noted.



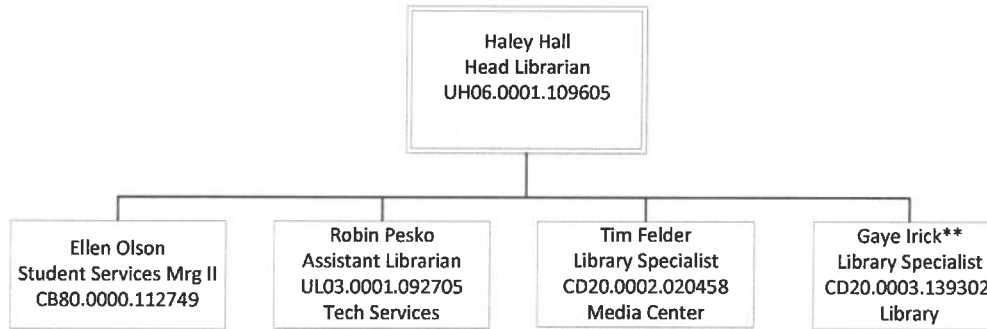
**ORANGEBURG-CALHOUN TECHNICAL COLLEGE**  
**ACADEMIC AFFAIRS**  
**INSTITUTIONAL EFFECTIVENESS**



\*\*Exempt from State Employee Grievance Act.

Positions are filled unless noted.

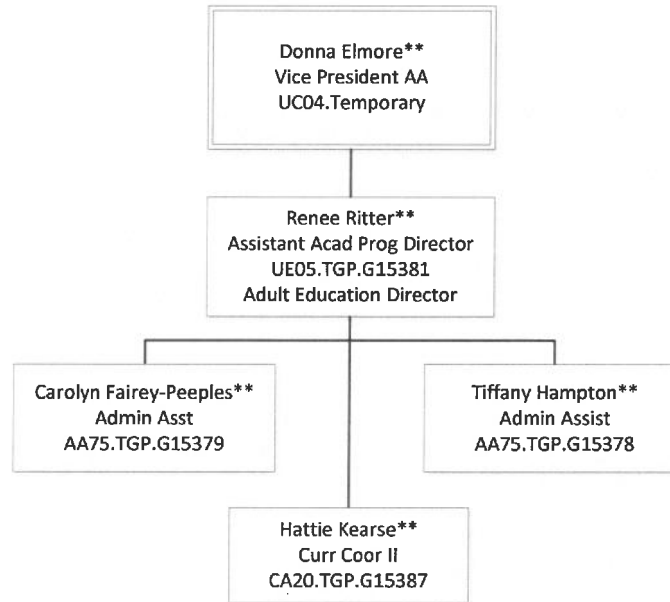
ORANGEBURG-CALHOUN TECHNICAL COLLEGE  
ACADEMIC AFFAIRS  
LIBRARY SERVICES



\*\*Exempt from State Employee Grievance Act.

Positions are filled unless noted.

**ORANGEBURG-CALHOUN TECHNICAL COLLEGE**  
**ACADEMIC AFFAIRS**  
**ADULT EDUCATION**



\*\*Exempt from State Employee Grievance Act.

Positions are filled unless noted.